

Jupiter

Information Technology

Connecting OOO to a Database via JDBC

06 June 2006

18 Church St
Swansea. SA4 3EA
United Kingdom

+44 (0)1792 875340
info@jup-it-er.co.uk
www.jup-it-er.co.uk

1. Introduction

Connecting OpenOffice.org to a database via JDBC is a fairly straightforward exercise. However, information about preparation is often missing from tutorials on the subject, and this part of the exercise is not obvious nor intuitive.

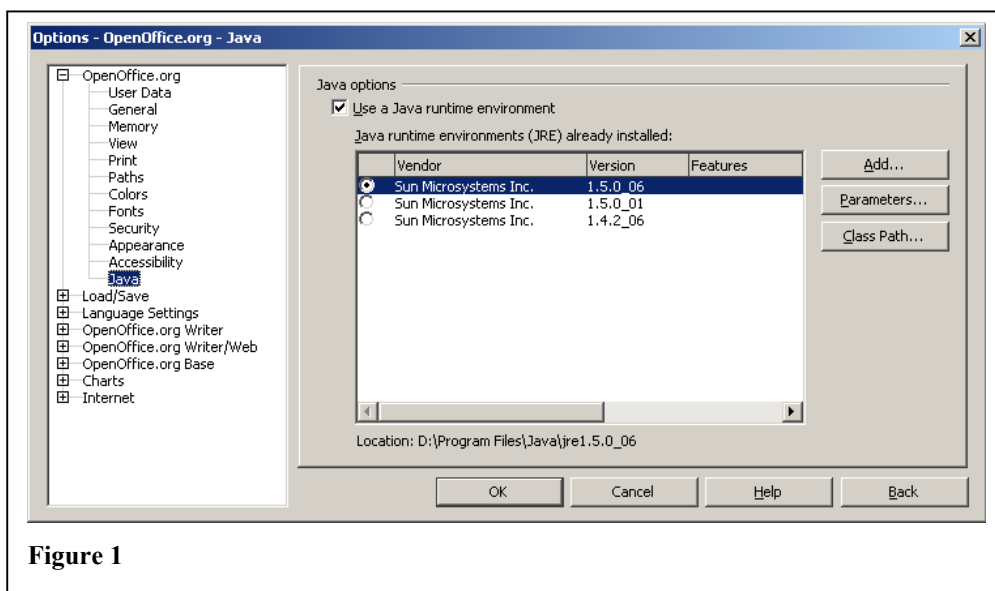
Therefore, here is a brief step-by-step tutorial on how to setup and connect to the database. Although the database server featured here is the McKoi SQL database server, the principles hold good for other database servers.

2. Prepare

Ensure that the Java VM is installed and setup. Normally, this will have been done during OpenOffice.org installation.

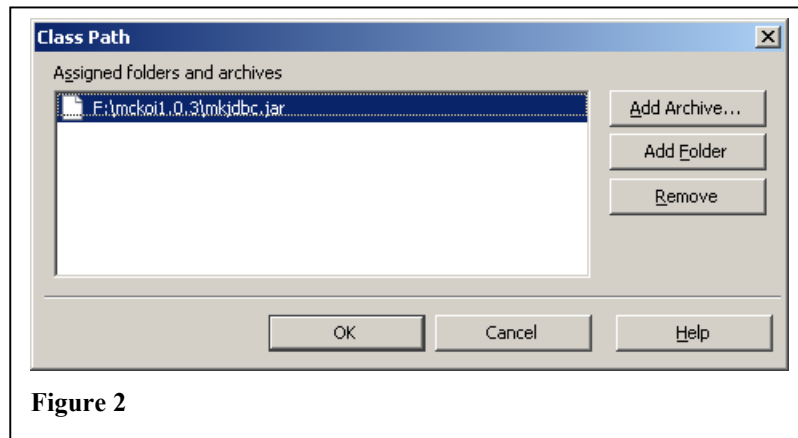
However, in the case that it is not, download and install a JRE from Sun Microsystems (<http://java.com/en/download/index.jsp>), then from the menu, select:

- a. Tools | Options, and select OpenOffice.org | Java (Figure 1)
- b. Check the 'Use a Java runtime environment' checkbox
- c. Click the 'Add...' button, and navigate to the installation location.



Once you are satisfied that a JRE is installed and in use for Ooo, it is necessary to specify the classpath for the JDBC driver.

- a. Click 'Classpath' button
- b. Click 'Add Archive' button (Figure 2)
- c. Browse for 'mkjdbc.jar'
- d. Click 'OK', and Click 'OK'
- e. Shutdown OpenOffice.org

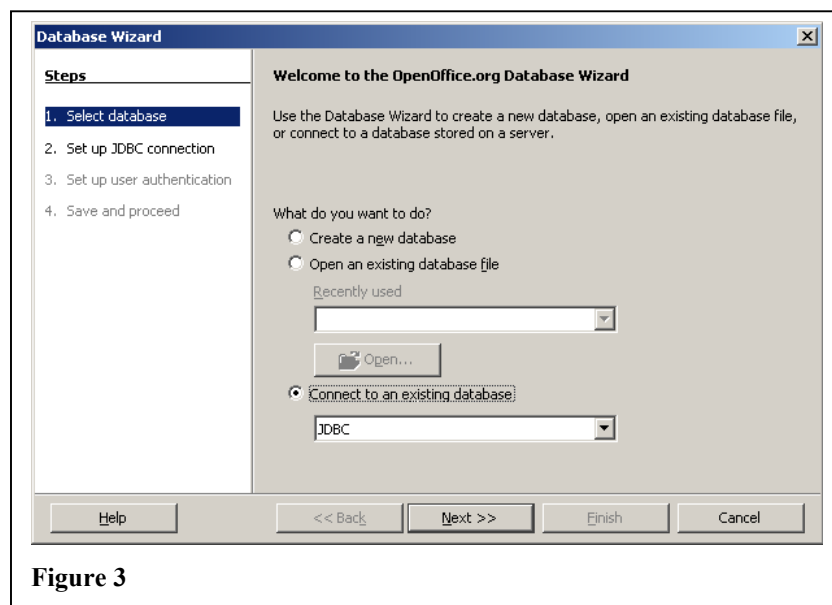


3. Connect

Start OpenOffice.org Base

You will be presented with the Database Wizard (Figure 3)

Select 'Connect to an existing database'



In 'Datasource URL' textbox add 'mckoi://localhost/' (Figure 4)

In 'JDBC Driver Class' textbox add 'com.mckoi.JDBCdriver'

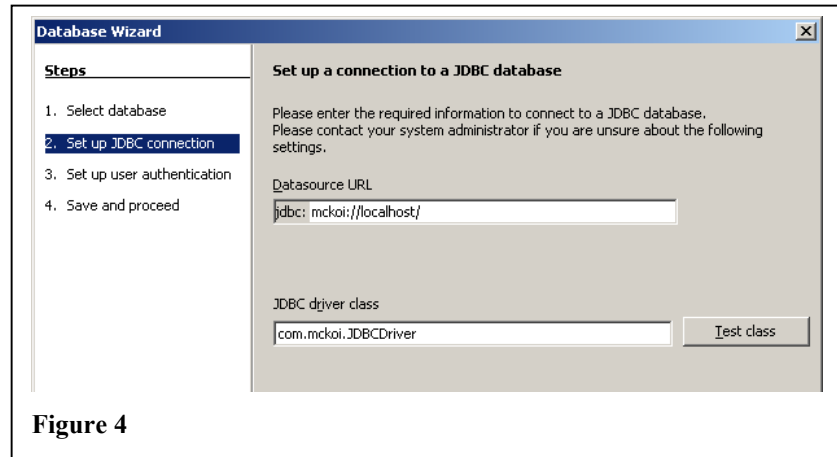


Figure 4

Click on 'Test class' button.

An information dialogue will be displayed, giving result of test (Figure 5).

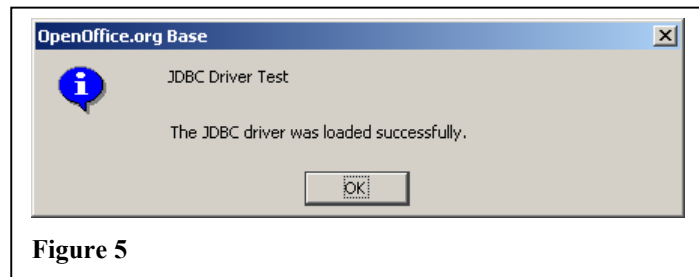


Figure 5

If test is successful, then Click 'Next' ...

Enter username (Figure 6).

Tick 'Password required' checkbox, if necessary.

Click 'Test Connection' button.

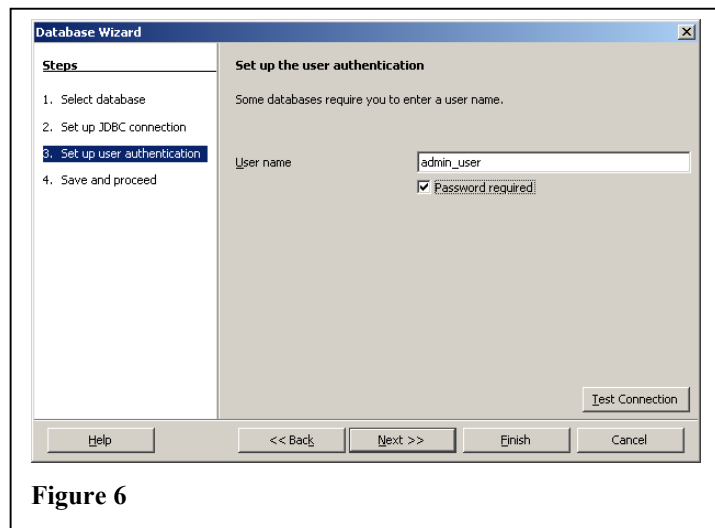


Figure 6

Enter password, if necessary (Figure 7).

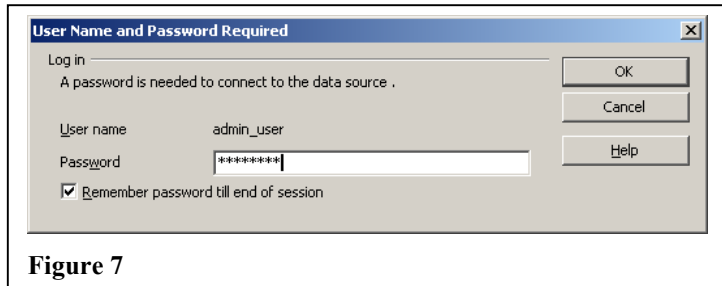


Figure 7

If test is successful, then Click 'Next' ...



Figure 8

Select options to proceed (Figure 9), and click Finish.

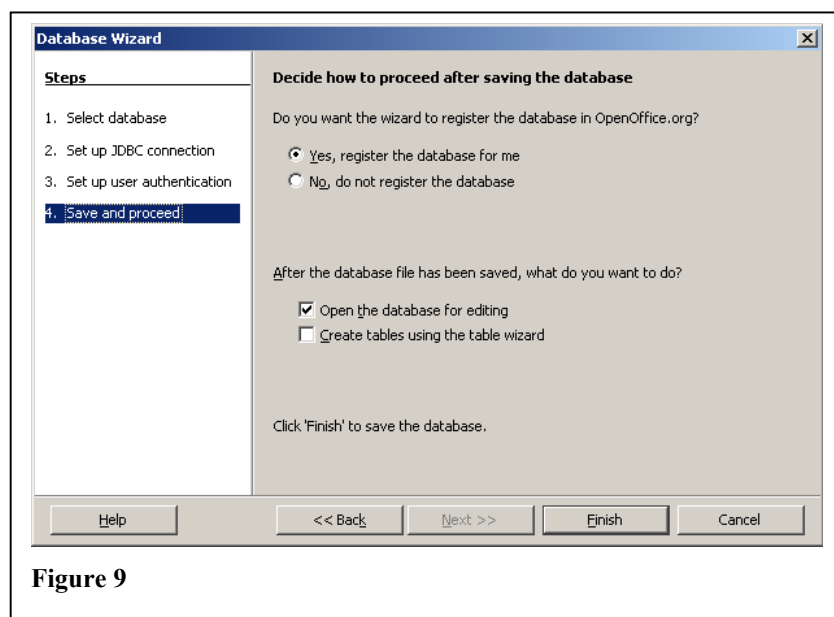


Figure 9

Save the database to a convenient location (Figure 10)

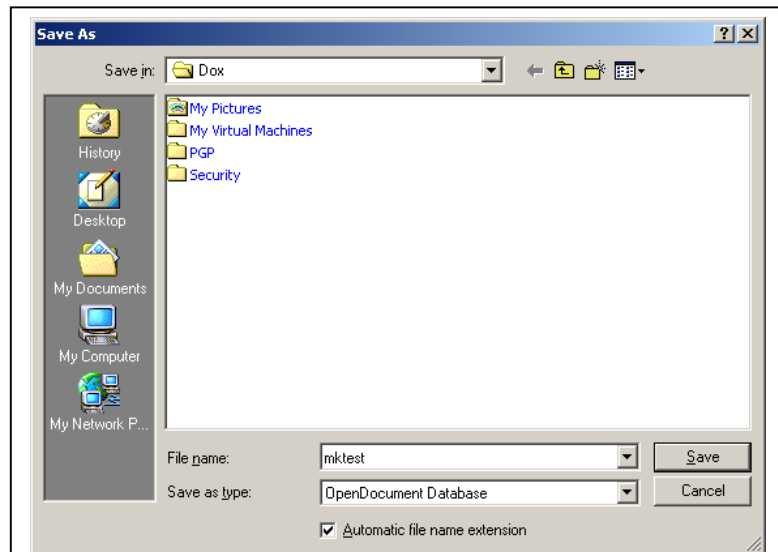


Figure 10

Now the database is ready for use (Figure 11)

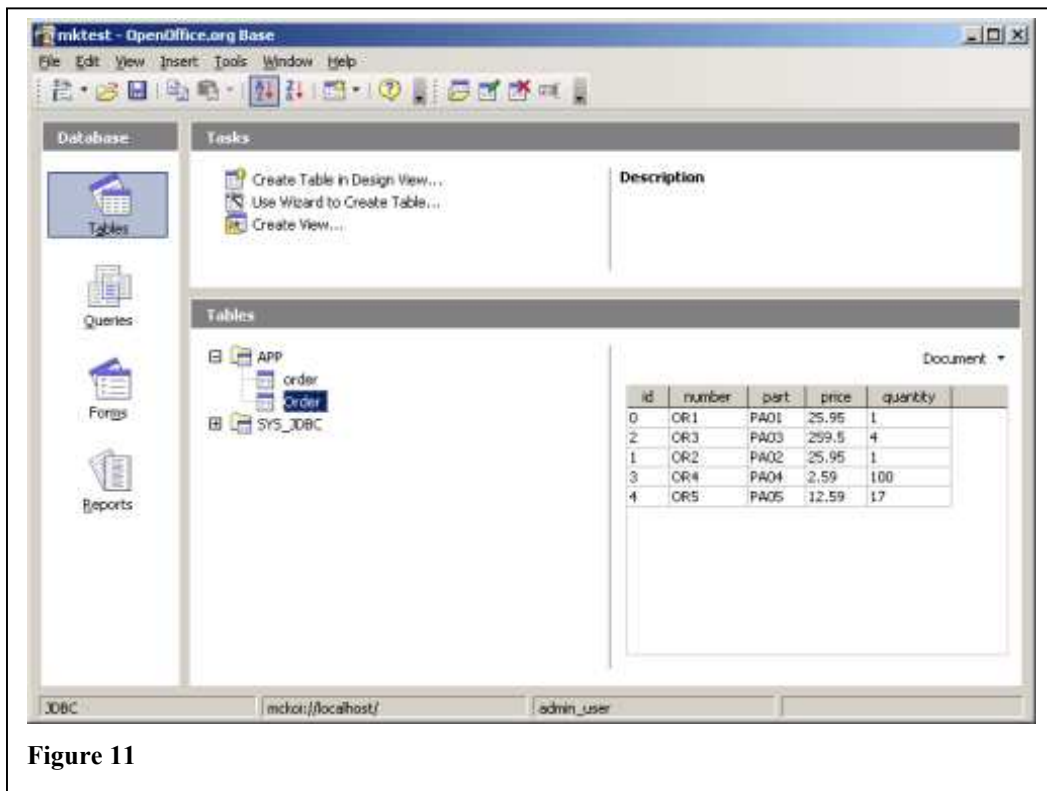


Figure 11

Jupiter Information Technology can provide full support for OpenOffice.org

- Training and training materials
- Installation and pre-installation support
- Help Desk and General Support
- Macros, templates, etc

URL's

OpenOffice.org	http://www.openoffice.org/
McKoi SQL Database Server	http://mckoi.com/database/
Jupiter Information Technology	http://www.jup-it-er.co.uk/
Java Runtime Environment	http://java.com/en/download/index.jsp